

nest "Circulation Module"
TECHNICAL RIDER ver. 2.1
Aug. 2001

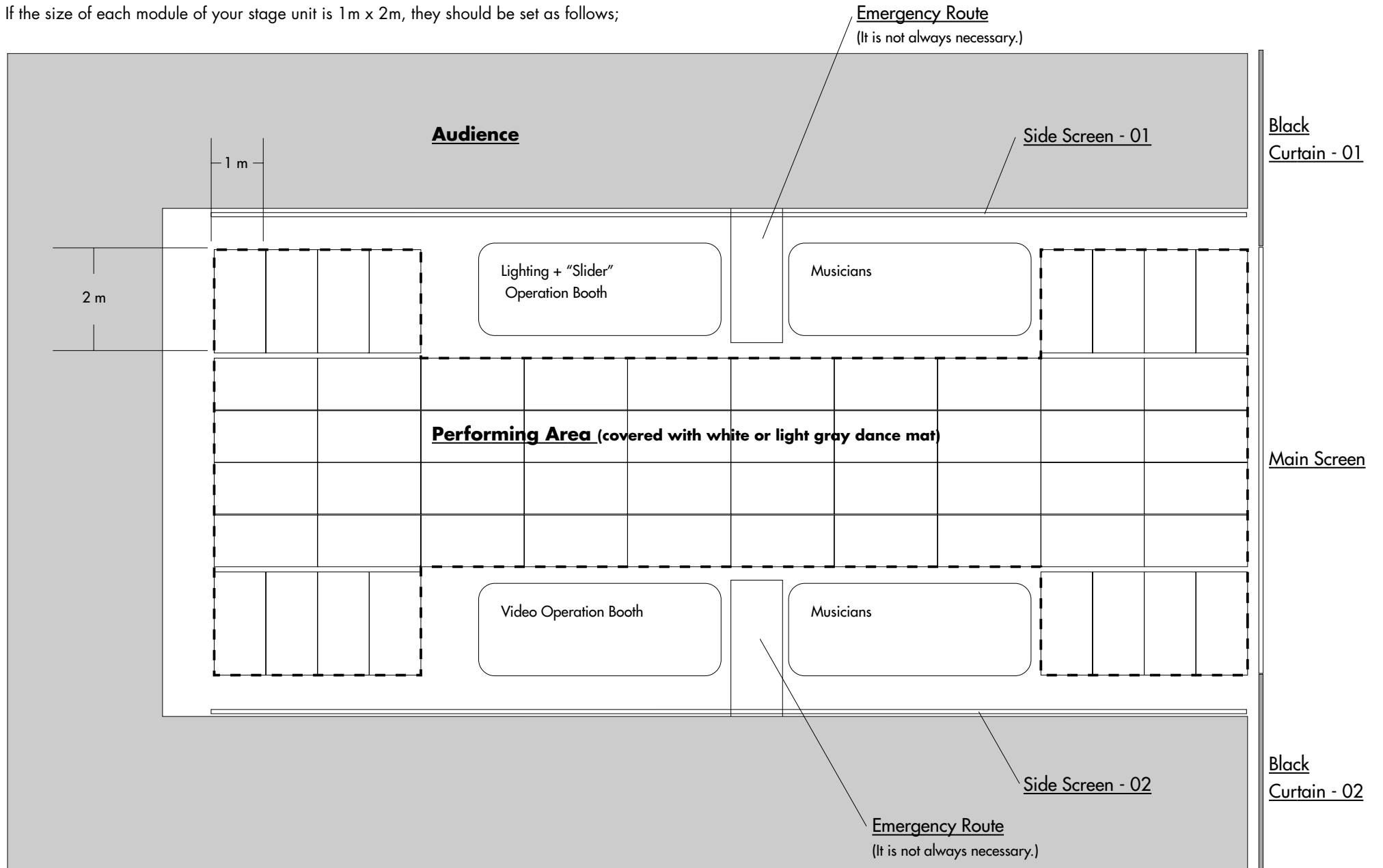


nest office
 2-24-4-301 Jingumae Shibuya-ku Tokyo 150-0001 Japan
 phone / facsimile : (81 3) 34 08 42 22
 e-mail : nest@kt.rim.or.jp

< TOP VIEW (including audience area) >

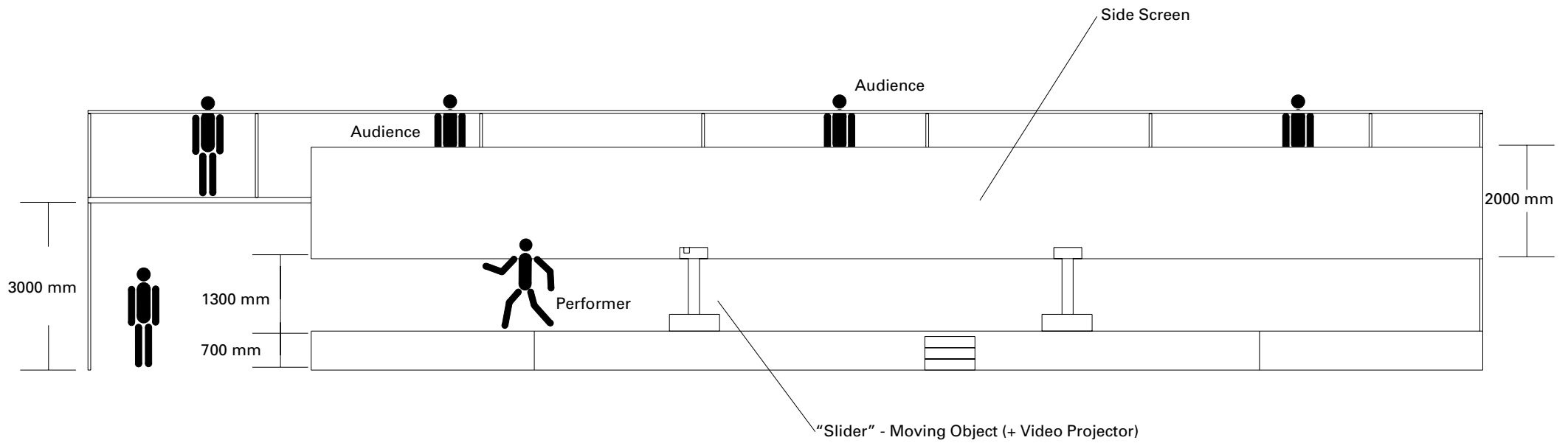
! The space must be flat empty hall like a warehouse.

If the size of each module of your stage unit is 1 m x 2m, they should be set as follows;

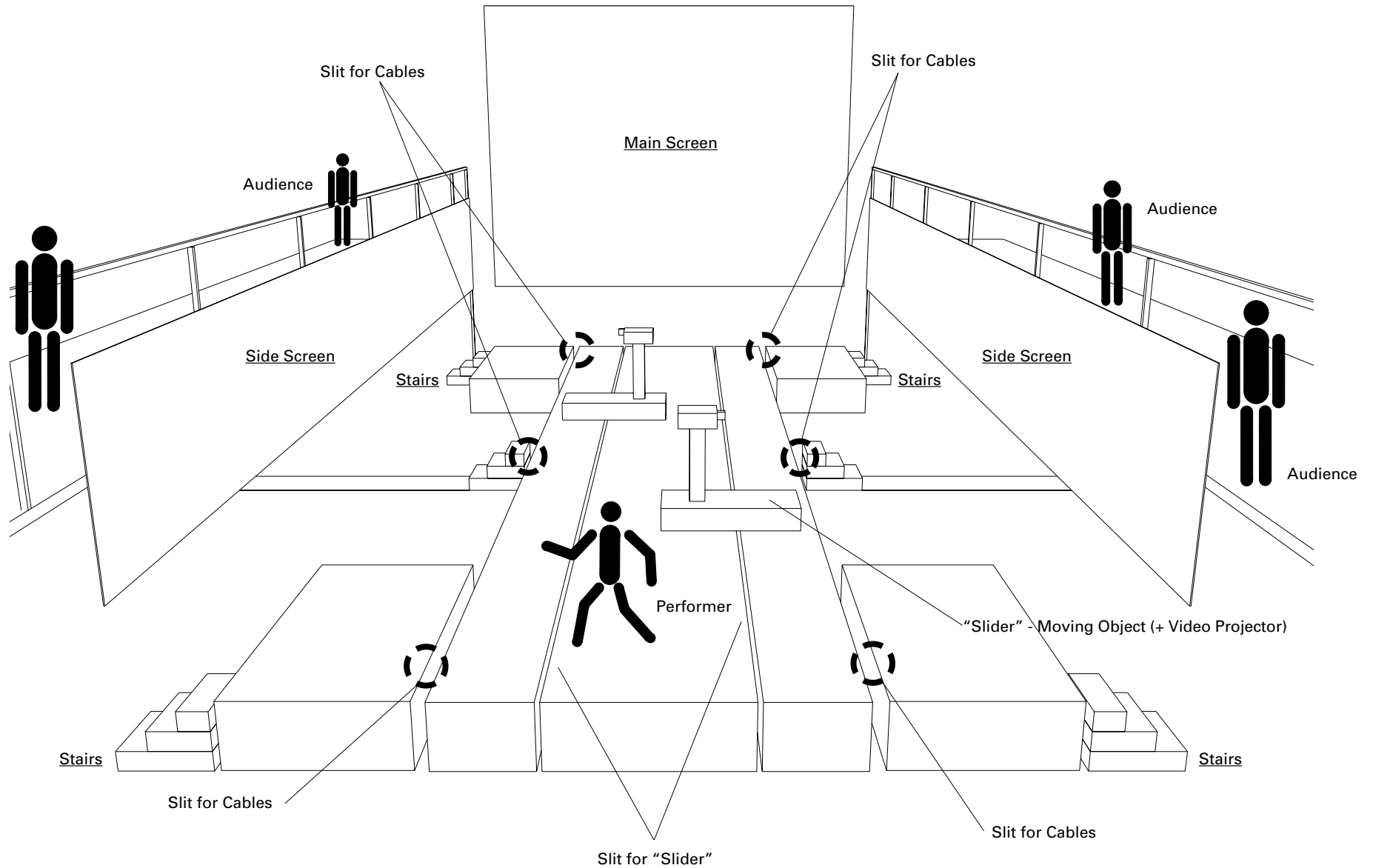


< SIDE VIEW (including audience area) >

3



< OVER VIEW (including audience area) >



< STAGE >

5

SPACE

D 13m x W 23m x H 7-8 m (including audience area)

MAIN SCREEN

x1 / SIZE - W 8.4 m x H 6.3 m

OTHERS

Headsets and communication equipments x8
 Fog machine and Liquid (DIFFUSION / DF-50 or CONCEPT / MK-V) x4-2
 3 phases 3 lines electricity (380 V or 200 V) x1

STAGE UNIT

x 56 / SIZE - D 1m x W 2m x H 0.7 m ->see page 2,3

SIDE SCREEN

x2 / SIZE - W 20 m x H 2 m

NEST brings

System for moving objects (machines, rails, etc.)

DANCE MAT

White or light gray which could cover all of performing area

BLACK CURTAIN

x2 / SIZE - W 3-4 m x H 7-8 m

< LIGHTING EQUIPMENTS >

	Product Name / Makers		Quantity	Priority	Arrangements	Remarks	
	Preferred	Alternative					
<Light>	CYBERLIGHT / HighEndSystem		8	AA	!!	Must be high end model	
	DATAFlash AF-1000 / HighEndSystem		8	A	!!	Controlled by DMX protocol	
	PAR-64 Narrow		40	B	!!		
<Gels>	No,181 / LEE		20	B	!!		
	No,880 / GAM		30	B	!!		
<Equipments & More>	Stand for AF-1000		8	A	!!	Stage height	
	Cables		Proper amount	A	!!		
	Cables for DMX512 highness protocol / Bergen		Proper amount	A	!!		
<Console>	SPARK / COMPULITE		1	AA	<>		
<Dimmers>	DMX512 protocol 2kw dimmer		40	AA	!!	Must be DMX512 protocol controllable	
<Others>	Genie or Lift	A-frame ladder	3	A	!!		
	Nest original GOBOs for CYBERLIGHT		28	AA	::		
	Macintosh / Apple Computer		1	A	::		
	! Bridge or Battens to hang lights above the stage					!!	
! Enough electric capacity					!!		

'!!' -> Arranged by local presenter
 '<>' -> NEST brings if local presenter can't arrange
 '::' -> NEST brings

< VISUAL EQUIPMENTS >

6

	Product Name / Makers		Quantity	Priority	Arrangements	Remarks
	Preferred	Alternative				
<Switcher>	XV-D1000 / SONY (NTSC)		1	AA	<>	must have LANC terminal
	MX-1 / FUTEK (NTSC)		1	AA	<>	must have LANC terminal
<Digital Video Deck>	DHR-1000 / SONY (NTSC)	Same type + DV Camera (NTSC)	4	AA	<>	
<Matrix Switcher>	SB-V3000 / SONY (NTSC)	or same type	1	AA	::	6 input / 6 output
<Distributor>	SRT-400VDA / SONY (NTSC)	or same type	1	A	<>	1 input / 5 output
<Video Monitor>	Typical Video Monitor (NTSC)		8	A	<>	
	15-21 inch Monitor (NTSC or PAL)		6 - 8	A	!!	
<Video Projector>	XV-Z5000 / SHARP or upper class (NTSC)		1	AA	<>	for Main screen
	XV-Z4050 / SHARP (NTSC)	XV-Z4000 / SHARP (NTSC)	2	AA	<>	for Side screens
<Video Camera>	Typical Video Camera (NTSC)		6	A	::	
	Typical Video Camera (PAL)		1	A	!!	Must have RCA output
<Tripod>	Typical tripod for Video Camera		6	A	::	
<Cables>	Long Cable (20-30m)		20	A	<>	

< SOUND EQUIPMENTS >

	Product Name / Makers		Quantity	Priority	Arrangements	Remarks
	Preferred	Alternative				
<Speaker System>	S-4 (3WAY DRIVE) / CLAIR BROS.	or same type	8-4	A	!!	
<Power Amp.>	CBA-1200 (CARVER) / CLAIR BROS.	or same type	16-8	A	!!	
<Main Console>	LIVE4 / Soundcraft 24ch input or upper class.	or same type	1	A	!!	
<Outboard Effect>	high quality digital reverb		1	A	!!	
	high quality comp-limiter (use for total limiter)		1	A	!!	
<Microphone>	typical microphones for Drum kits.		8-4	A	!!	
<W/L Microphone>	use for Vocal.		1	A	!!	
<Monitor Speaker>	FM1202 / EV for Drum monitor.	or same type	1	A	!!	
	SX200 / EV with STAND	or same type	4-2	A	!!	2 stereo set for 2 DJs
	Amplifier (monitoring from DJ mixer monitor out)		2	A	!!	
<DAT Deck>	PCM-2600 / SONY	or same type	1	A	!!	
<CD Player>	Professional or DJ use	or same type	1	AA	!!	Must be able to do 'quick start'

< EQUIPMENTS FOR MUSICIANS >

	Product Name / Makers		Quantity	Priority	Arrangements	Remarks	
	Preferred	Alternative					
DJ set -01	<Turn table>	SL1200MK3 / Technics	or same type	2	A	!!	
	<DJ Mixer>	PMC-05PRO / Vestax		1	A	<>	
	<Effectors>	RV-3 / Boss		1	A	<>	
		DD-5 / Boss		1	A	<>	
		DS-1 / Boss		1	A	<>	
		Digital Multi Effector		2	A	<>	
DJ set -02	<Turn table>	SL1200MK3 / Technics		2	A	!!	
	<DJ Mixer>	PMC-27 / Vestax		1	B	<>	
	<CD Player>	CDX-12		1	B	<>	
Drum set etc.	<Drum set>	bass drum		1	A	!!	must be bigger one
		floor tom		1	A	!!	
		low tom		1	A	!!	
		ride cymbal		1	A	!!	
		crash cymbal		2	A	!!	
		snare		1	A	::	
		pedals		1	A	::	
		synthesizer drum pads		1	A	::	
	<Sampler>	S760 / Roland		1	AA	<>	
		S2000 / AKAI		1	AA	<>	
	<Synthesizer>	Bass Station / Novation		1	A	<>	
		Bass Station Rack / Novation		1	A	<>	
	<Rhythm Machine>	Drum Station / Novation		1	B	<>	
	<Mixer>	M16 E / Roland		1	AA	<>	
	<Effector>	1201 / Zoom		1	AA	<>	
		1202 / Zoom		1	AA	<>	
		Rev 100 / YAMAHA		1	B	<>	
		166A / dbx		1	A	<>	
	<MIDI Interface>	MIDI EXPRESS / Mark of the Unicorn		1	AA	<>	
	<Others>	MIDI cable		Proper amount	A	<>	
		Phone cable		Proper amount	A	<>	

< TECHNICAL CREW & HELPING HANDS >Day of setup and take down

- 5 carpenters and 5 assistants
- 5 lighting technicians
- 1 house PA engineer and 2~3 sound assistants
- 2~3 video assistants

Day of performance

- 4 stage assistants
- 1 house PA engineer

- Presenter must designate a Technical Director with decision making authority, a Master Electrician, and a sound engineer familiar with the sound system in the facility to be present, responsible to, and accessible for consultation with the Company at all crew calls. Running crew must be the same for both rehearsals and performances. The Company technical person may run the lights and videos for both Technical Rehearsal and Performance (unless union rules direct otherwise).

< WARDROBE >

- Dressing rooms capable of accommodating 10 people
- Clean, working lavatories and toilets in the backstage/dressing room area
- Wardrobe room or work area with adequate lighting, running water and electrical current
- Washing machine and dryer or information regarding the location of a near-by coin Laundromat

< BACKSTAGE AMENITIES >

- Facial tissues in each dressing room and on both sides of the stage
- Cold water and cups on each side of the stage
- Hot water, cups, instant coffee, cream, sugar and tea bags at one location in the dressing room area
- If two performances are scheduled on the same day, a light meal consisting of sandwiches, soup, salad, pasta, beverages, etc. should be provided at the theater between performances for the cast and crew unless sufficient time is provided to eat elsewhere.

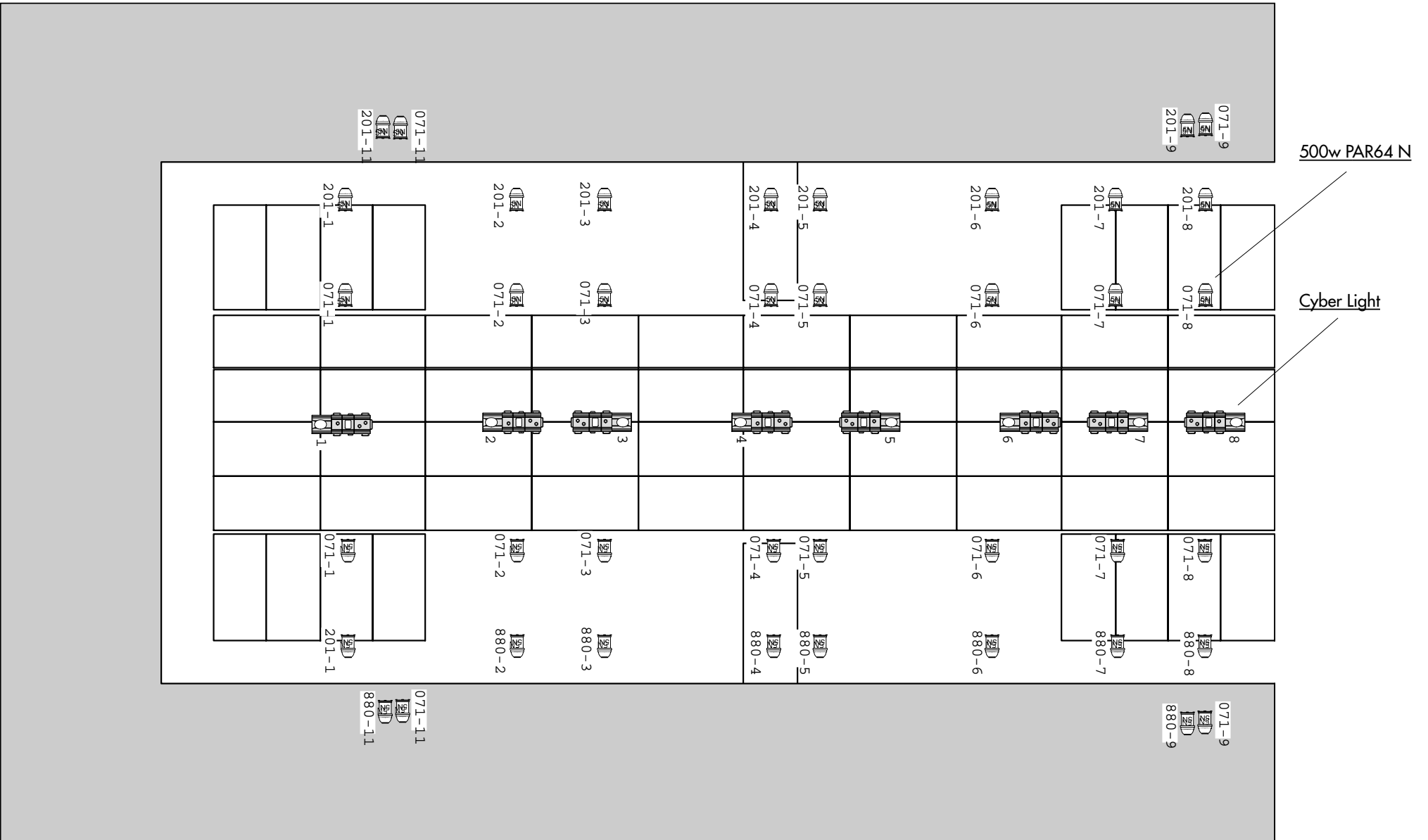
< REHEARSAL STUDIO >

- We need rehearsal studio for dancers during rehearsal. The studio must have wooden floor and mirrors. The size of studio is not needed same as 'Performing Area'.

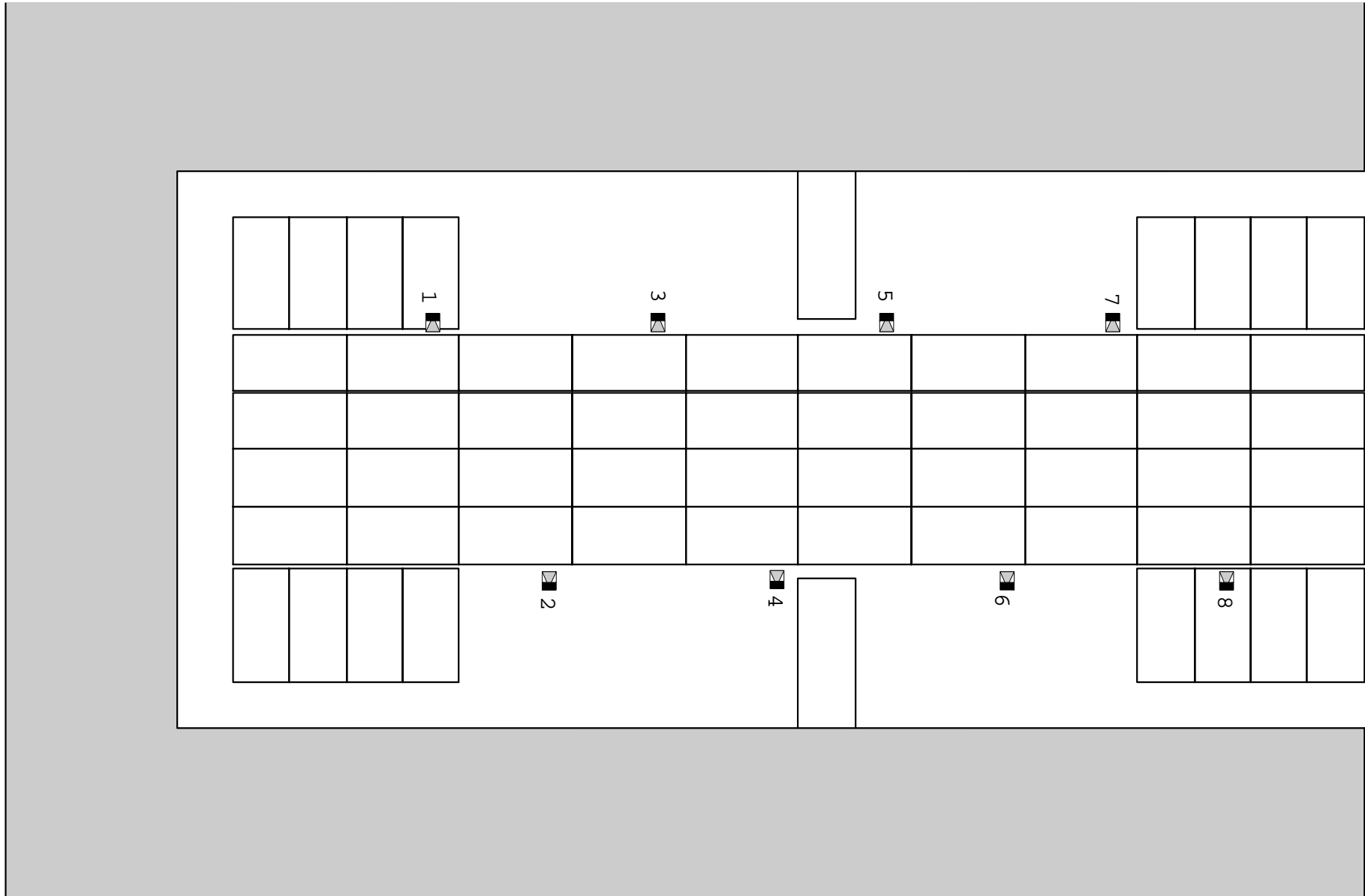
< TYPICAL SCHEDULE >

setup	2days
rehearsal	2days
performance	
take down	1day

< LIGHTING / Ceiling Level >

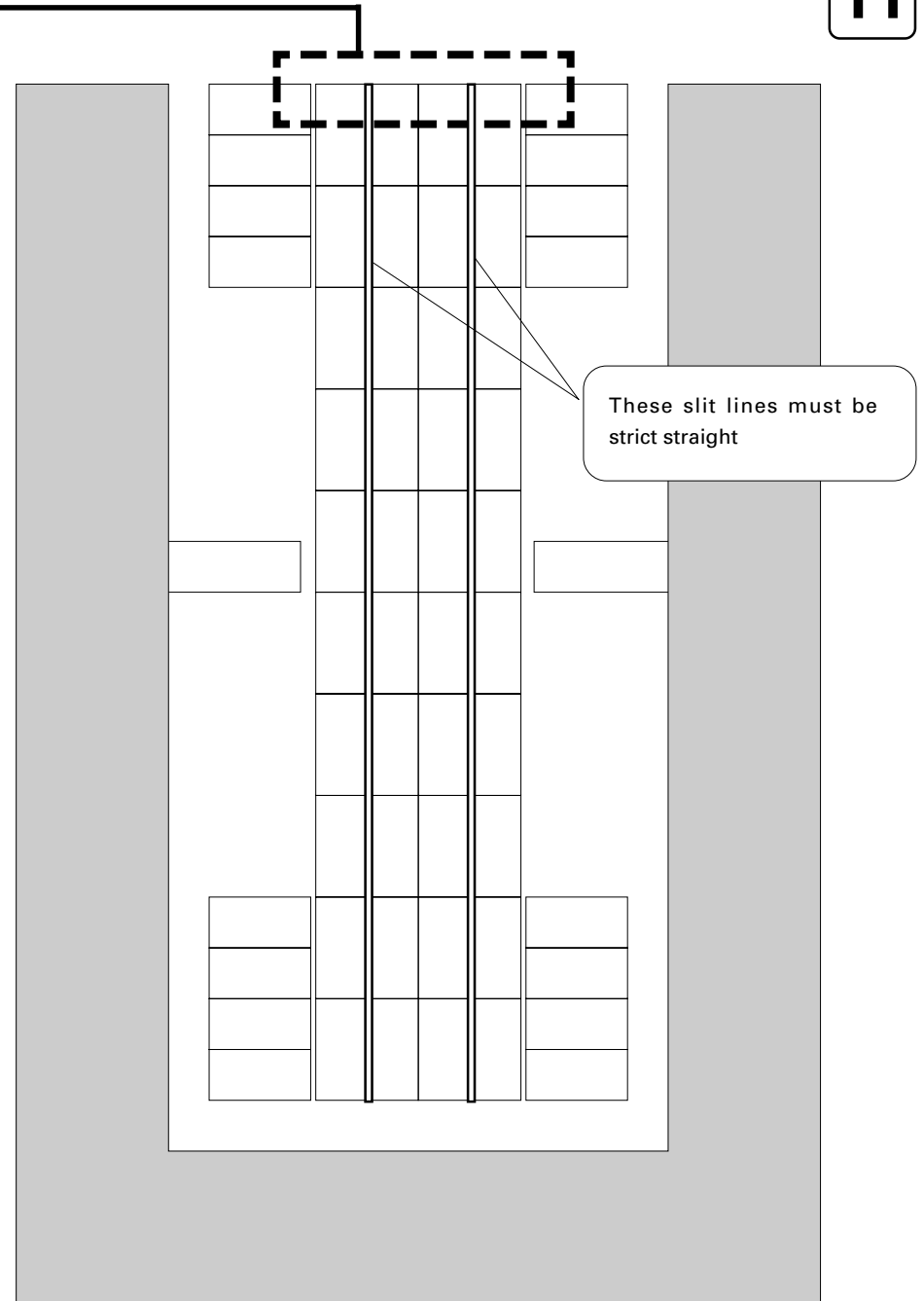
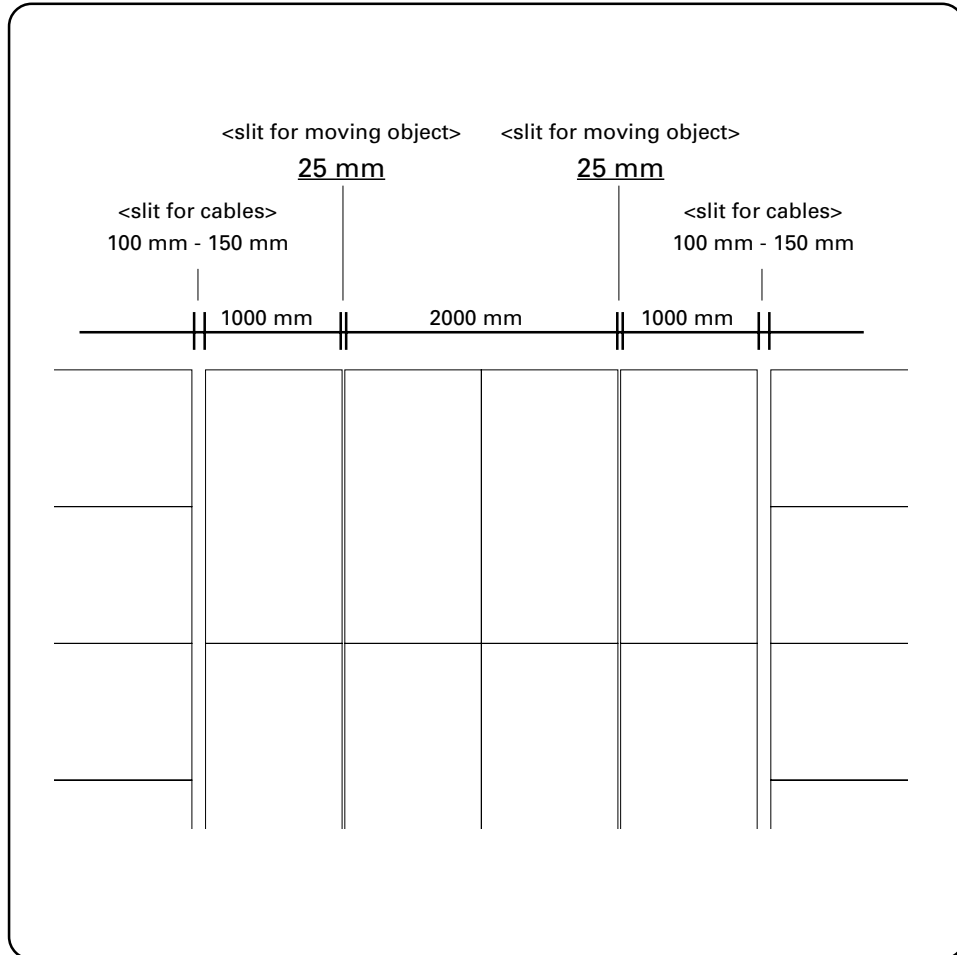


< LIGHTING / Stage level >



DATA Flash
AF-1000
(+ Stand)

< SLIT FOR MOVING OBJECT / STAGE UNIT SETTING - 1 >



< SLIT FOR MOVING OBJECT / STAGE UNIT SETTING -2>

